

World-Class, High-Contrast, Multi-Screen Projection

The PT-D9610E and PT-D9510E are industry-leading Panasonic's large-venue DLP™-based projectors. These advanced, high-contrast models inherit Panasonic's brilliant picture quality, innovative functions and easy maintenance. A host of new technologies are incorporated including an extremely high contrast ratio for cinema applications. Panasonic's edge blending function also makes it easy to project high-quality images using multiple projectors. The PT-D9610E and PT-D9510E are fully equipped for permanent or event applications, and are ideal for convention halls, sports arenas, control centres, movie theatres and post production display for digital cinema. These exciting new projectors clearly show Panasonic's leadership position in DLP™-based projection technology.



Emmy Award-Winning Technology

At the core of the PT-D9610E and PT-D9510E is the unique format resizing technology used in our Emmy Award-winning Universal Format Converter (UFC). This revolutionary technology automatically converts a multitude of image formats to the native resolution. Maximum resolution for each format is displayed at all times.



Edge Blending

The PT-D9610E and PT-D9510E's edge blending technology of the makes it possible to display full-motion images over the entire span of a multi-projection screen without any discernible lines between projected images.

Specifications

Main Unit	200–240 V AC, 50/60 Hz
Power supply:	2,200 W (1,900 VA)(2.8 W at standby mode)
Power consumption:	
Colour system:	PAL/PAL-M/PAL-NTSC/M-NTSC/SECAM (with optional ET-MD95VM2)
Scanning frequency:	
RGB:	fH 15–100 kHz, fV 24–120 Hz
YPbPr:	480i: fH 15.75 kHz, fV 60 Hz 625i: fH 15.63 kHz, fV 50 Hz 480p: fH 31.5 kHz, fV 60 Hz 720p: fH 45 kHz, fV 60 Hz 1035i: fH 33.75 kHz, fV 60 Hz 1080i: fH 33.75 kHz, fV 60 Hz
Video/S-Video:	PAL/PAL-N/SECAM: fH 15.63 kHz, fV 50 Hz PAL-M/NTSC/M-NTSC: fH 15.75 kHz, fV 60 Hz DLP™ system
DMD™:	PT-D9610E: 1.1" (diagonal) DMD™ (x 3), PT-D9510E: 0.9" (diagonal) DMD™ (x 3),
Pixels:	PT-D9610E: 1,310,720 (1,280 x 1,024) x 3 PT-D9510E: 786,482 (1,024 x 768) x 3
Screen aspect ratio:	
PT-D9610E:	5:4 (16:9 compatible)
PT-D9510E:	4:3 (16:9 compatible)
Lens:	Optional
Lamp:	1,600 W xenon lamp
Colours:	Full colour (16,777,216 colours)
Brightness:	
PT-D9610E:	12,000 ANSI lumens (in high mode), 10,000 ANSI lumens (in normal mode)
PT-D9510E:	10,000 ANSI lumens (in high mode), 9,000 ANSI lumens (in normal mode)
Contrast ratio:	
PT-D9610E:	1,000:1 (full white/full black) in contrast super mode (brightness switches to 7,000 ANSI lumens in super mode) 550:1 (full white/full black) in contrast high/normal mode
PT-D9510E:	1,000:1 (full white/full black) in contrast super mode (brightness switches to 6,000 ANSI lumens in super mode) 450:1 (full white/full black) in contrast high/normal mode

Resolution:	
RGB:PT-D9610E:	1280 x 1024 pixels
PT-D9510E:	1024 x 768 pixels (with optional ET-MD95RGB)
Video:	560 TV lines (with optional ET-MD95VM2)
Screen size:	100"–600" diagonal (aspect ratio: 4:3) 100"–180" diagonal with ET-D95LE9 (aspect ratio: 4:3)
Lens shift: Vertical:	10:0–0:10 (powered)
Horizontal:	8:2–2:8 (powered)
Installation:	Ceiling/desk, front/rear (menu selection)
Keystone correction:	±10°
Terminals:	
LAN:	RJ-45, 10Base-T/100Base-TX
Serial:	D-sub 9-pin
RS-232C/422 IN:	D-sub 9-pin x 1
RS-232C/422 OUT:	D-sub 9-pin x 1
REMOTE 1 IN:	D-sub 9-pin x 1
REMOTE 2 IN:	M3 jack x 1
REMOTE 2 OUT:	M3 jack x 1
Power cord length:	2.5 m (8'2")
Cabinet material:	Aluminum + PPE plastic
Dimensions (W x H x D):	753 x 428 x 1,051 mm
Weight:	100 kg
Operating temperature:	0°–40°C (32°–104°F), 0°–35°C (32°–95°F) at high mode
Operating humidity:	10%–80% (no condensation)
Safety regulations:	UL1950, C-UL, EN60950, FCC class A, EN50082-1, EN55022 (B), EN61000-3-2, EN61000-3-3, VDE, CB Certificate, C-tick
Supplied accessories:	Wireless/wired remote control unit, Batteries for remote control unit, Remote control cable
Optional accessories:	
For PT-L9610E:	• Zoom lens (1.5-2.0:1): ET-D95LE5 • Zoom lens (2.0-2.5:1): ET-D95LE6 • Zoom lens (2.5-4.0:1): ET-D95LE7 • Zoom lens (4.0-7.0:1): ET-D95LE8
For PT-L9510E:	• Zoom lens (1.5-2.5:1): ET-D95LE1 • Zoom lens (2.5-4.0:1): ET-D95LE2 • Zoom lens (4.0-7.0:1): ET-D95LE3
Common:	• Video/S-Video input board: ET-MD95VM2 • RGB/YPbPr input board: ET-MD95RGB • SDI (480i/576i) input board: ET-MD95SD1 • SDI (480i/576i/480p) input board: ET-MD95SD2 • SDI (720p/1035i/1080i/1080p) input board: ET-MD95SD3 • TMDS input board: ET-MD95T • Ceiling mount bracket: ET-PKD95 • Dual stacking mount bracket: ET-DFD95 • Replacement lamp unit: ET-LAD9610

Options

Lenses

ET-D95LE1
Zoom lens
(1.5-2.5 : 1)



ET-D95LE5
Zoom lens
(1.5-2.0 : 1)



ET-D95LE2
Zoom lens
(2.5-4.0 : 1)



ET-D95LE6
Zoom lens
(2.0-2.5 : 1)



ET-D95LE3
Zoom lens
(4.0-7.0 : 1)



ET-D95LE7
Zoom lens
(2.5-4.0 : 1)



ET-D95LE9
Fixed short focus lens
(for rear projection)
(0.8 : 1)



ET-D95LE8
Zoom lens
(4.0-7.0 : 1)



The PT-D9510E needs modification to attach the ET-D95LE9.

Boards

ET-MD95VM2

Video/S-Video input board



ET-MD95RGB

RGB/YPbPr input board



ET-MD95SD1

SDI (480i/576i) input board



ET-MD95SD2

SDI (480i/576i/480p) input board



ET-MD95SD3

SDI (720p/1035i/1080i/1080-24p) input board



ET-MD95T

TMDS input board



Brackets

ET-PKD95

Ceiling mount bracket



ET-DFD95

Dual stacking mount bracket



Lamp

ET-LAD9610

Replacement lamp unit



PT-D9610E standard setting-up position examples (aspect ratio: 5:4)

Screen size	L								H				
	zoom								E1		E2		
	ET-D95LE5		ET-D95LE6		ET-D95LE7		ET-D95LE8		zoom	fixed	zoom	fixed	
	min.	max.	min.	max.	min.	max.	min.	max.	ET-D95LE5/ET-D95LE9	ET-D95LE6/ET-D95LE7/ET-D95LE8	ET-D95LE6/ET-D95LE7/ET-D95LE8	ET-D95LE9	
100"	3,203	4,194	4,226	5,172	5,033	7,927	8,066	13,905	1,927	0-1,587	793	0-1,587	-793
120"	3,814	5,007	5,079	6,165	6,025	9,513	9,654	16,686	2,262	0-1,904	952	0-1,904	-952
150"	4,732	6,226	6,299	7,655	7,512	11,891	12,035	20,858	2,765	0-2,380	1,190	0-2,380	-1,190
180"	5,650	7,444	7,519	9,146	8,999	14,270	14,416	25,029	3,267	0-2,856	1,428	0-2,856	-1,428
200"	6,261	8,257	8,332	10,139	9,991	15,855	16,004	27,810	3,602	0-3,173	1,587	0-3,173	-1,587
250"	7,791	10,289	10,365	12,623	12,470	19,820	19,973	34,763	–	0-3,967	–	0-3,967	–
300"	9,320	12,320	12,398	15,107	14,948	23,784	23,941	41,715	–	0-4,760	–	0-4,760	–
350"	10,849	14,352	14,431	17,591	17,427	27,748	27,910	48,668	–	0-5,554	–	0-5,554	–
400"	12,379	16,383	16,464	20,074	19,906	31,712	31,879	55,620	–	0-6,347	–	0-6,347	–
450"	13,908	18,415	18,497	22,558	22,384	35,676	35,847	62,573	–	0-7,140	–	0-7,140	–
500"	15,438	20,446	20,530	25,042	24,863	39,640	39,816	69,525	–	0-7,934	–	0-7,934	–
600"	18,496	24,509	24,595	30,010	29,820	47,568	47,753	83,430	–	0-9,520	–	0-9,520	–

L: Projection distance between the screen and the centre of the front feet of the projector.

H: Height from the edge of screen to centre of lens.

PT-D9510E standard setting-up position examples (aspect ratio: 4:3)

Screen size	L						H				
	zoom						E1		E2		
	ET-D95LE1		ET-D95LE2		ET-D95LE3		zoom	fixed	zoom	fixed	
	min.	max.	min.	max.	min.	max.	ET-D95LE1/ET-D95LE2/ET-D95LE3	ET-D95LE9	ET-D95LE1/ET-D95LE2/ET-D95LE3	ET-D95LE9	
100"	3,261	5,197	5,270	8,221	8,196	14,142	2,398	0-1,524	762	0-1,524	-762
120"	3,870	6,203	6,279	9,833	9,820	16,976	2,827	0-1,829	914	0-1,829	-914
150"	4,784	7,713	7,792	12,251	12,257	21,227	3,471	0-2,286	1,143	0-2,286	-1,143
180"	5,698	9,223	9,305	14,669	14,693	25,478	4,114	0-2,743	1,372	0-2,743	-1,372
200"	6,307	10,229	10,314	16,281	16,318	28,312	–	0-3,048	–	0-3,048	–
250"	7,830	12,745	12,835	20,310	20,379	35,397	–	0-3,810	–	0-3,810	–
300"	9,353	15,261	15,357	24,340	24,440	42,482	–	0-4,572	–	0-4,572	–
350"	10,876	17,777	17,879	28,369	28,501	49,567	–	0-5,334	–	0-5,334	–
400"	12,399	20,293	20,401	32,399	32,562	56,651	–	0-6,096	–	0-6,096	–
450"	13,922	22,809	22,923	36,429	36,623	63,736	–	0-6,858	–	0-6,858	–
500"	15,455	25,325	25,445	40,458	40,684	70,821	–	0-7,620	–	0-7,620	–
600"	18,491	30,357	30,488	48,517	48,806	84,991	–	0-9,144	–	0-9,144	–

Panasonic

Panasonic is the brandname of Matsushita Electric.

Weights and dimensions shown are approximate. Specifications subject to change without notice. This product may be subject to export control regulations. VGA and XGA are trademarks of International Business Machines Corporation. SVGA is a registered trademark of the Video Electronics Standards Association. Windows is a registered trademark of Microsoft Corporation. All other trademarks are the property of their respective trademark owners. Projection images simulated.

Panasonic

PT-D9610E PT-D9510E

Large Venue DLP™-Based Projectors

PAL/PAL-M/PAL-N/SECAM/NTSC/M-NTSC

Cinema-Quality Projectors

- Ultra-high contrast ratio of 1,000:1
- Built-in multi-screen edge blending technology
- Network functions including remote control and status monitoring
- Abundant options for versatile system configurations
- Low-noise design
- One-touch auto setup



High Brightness, High Contrast

1,000:1 contrast ratio

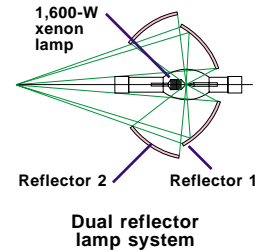
Panasonic's newly developed optical system and dynamic lamp control system with artificial intelligence (AI) have achieved a remarkable 1,000:1 contrast ratio. This combines with a brightness of 12,000 (PT-D9610E)/ 10,000 (PT-D9510E) ANSI lumens for crisp, high-resolution images in virtually any viewing environment. Contrast can be switched between Super, High and Normal as conditions require. Ideal for cinema viewing applications.

Bright 12,000/10,000 ANSI lumens

The PT-D9610E and PT-D9510E feature a DLP system with three Digital Micromirror Device (DMD) chips. This is combined with Panasonic's unique optical system and 1,600-W xenon lamp to achieve 12,000 ANSI lumens for the PT-D9610E and 10,000 ANSI lumens for the PT-D9510E. The xenon lamp system reproduces natural colours and stunning brightness.

High-efficiency optical system

Panasonic's unique optical system maximizes lamp light efficiency. Thanks to a highly condensing dual reflector system and wide convergence angle, the compact PT-D9610E and PT-D9510E offer a very bright light source.



Contrast mode and light output

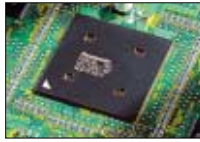
contrast mode:	Super	High	Normal
brightness:	7,000 6,000	12,000 10,000	12,000 10,000
contrast ratio:	1,000:1 1,000:1	550:1 450:1	550:1 450:1
note:	Highest contrast ratio.	Values are the same as Normal mode. The AI function gives the impression of higher contrast.	Used it is desired to turn AI off and project the source as it is. Use for maximum brightness with standard DLP™ contrast ratio. (Without AI function)

Upper: PT-L9610E
Lower: PT-L9510E



UFC for faithful moving pictures

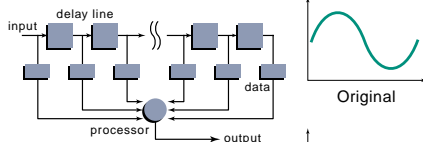
Each projector is equipped with Panasonic's Emmy Award-winning Universal Format Converter (UFC), a high-precision digital filter that greatly improves moving images. Projected images are super-smooth and natural with no visual artifacts caused by image resizing.



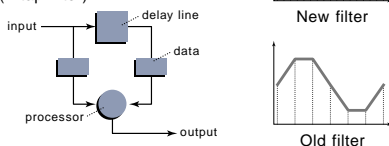
High-performance original UFC chip

Digital Filter Comparison

Panasonic's new filter (24-tap multi-filter)



Conventional filter (2-tap filter)



Panasonic's high-precision digital filter converts formats with a level of smoothness that is suitable for moving picture signals.

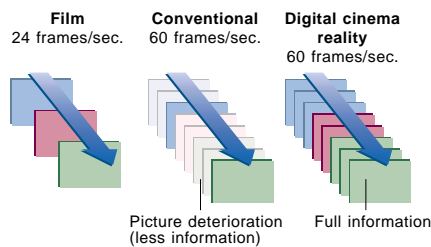
Digital processing

The PT-D9610E and PT-D9510E incorporate a host of Panasonic-developed video-processing technologies designed to ensure superior reproduction of moving pictures from a variety of sources. High-speed DSP chips enable interlaced-to-progressive (IP) conversion for HD sources,

complete with digital cinema reality (DCR) and digital noise reduction (DNR).

- The built-in **digital detail enhancer** checks and corrects the quality of 368,000 pixels in each image to improve sharpness and clarity.
- The **digital cinema reality** circuit provides progressive processing optimized for a 24-frames/sec moving source, helping to reproduce the image with quality faithful to the original cinema image.
- Full compatibility with digital format (optional)
- High resolution: PT-D9610E: SXGA native, UXGA max., PT-D9510E: XGA native, UXGA max.

Digital Cinema Reality



Digital cinema reality circuit preserves full image quality as it converts each frame of a movie source to TV signals.

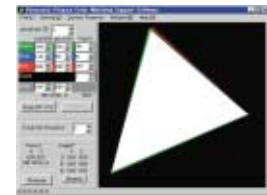
Artificial Intelligence (AI)

AI technology dynamically refreshes image settings like brightness, contrast and gamma for each individual scene. This ensures that details remain crisp and clear, even in dimly and brightly lit scenes.

Multi-Screen

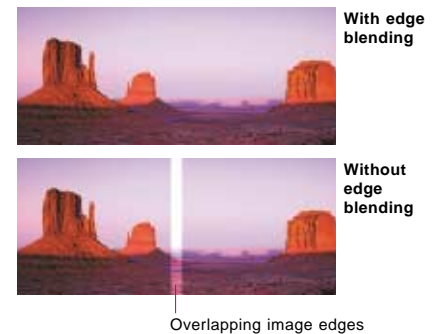
Colour matching

When several PT-D9610E or PT-D9510E units are used together, this function corrects for slight variations in the colour reproduction range of individual projectors. The PC software assures easy, accurate control. To simplify the setup process, you can adjust the projectors before delivery to the installation site. The colour-matching function for up to 9 units, for multi-screen or single screen presentations.



Edge blending

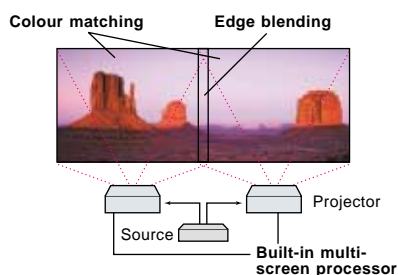
This function controls the brightness at overlapping image edges to assure uniform, natural-looking multi-screen images. When projecting HD sources with a single projector, part of the DMD device is unused. In multi-screen



projections with two projectors, the DMD devices increase the image's horizontal resolution while optimizing to maximum vertical resolution.

Built-in multi-screen processor

The PT-D9610E and PT-D9510E can project large, multi-screen images without any additional equipment. Up to 100 units (10 x 10) can be edge-blended at a time.



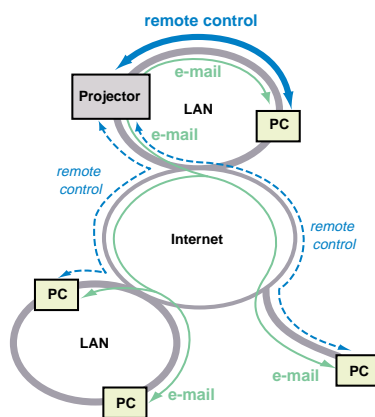
The built-in multi-screen processor enables enlarged multi-screen projection without using any additional special equipment. Colour matching and edge blending make it easier to obtain proper multi-screen picture quality.

Maintenance

Network functions

The PT-D9610E and PT-D9510E are network-ready, with interfaces for 10Base-T and 100Base-TX provided as standard equipment. All functions can be controlled from a personal computer on a local area network (LAN) via a standard Web browser without any additional application

software. By assigning a TCP/IP address to the projectors, you can monitor their operation over LAN or the Internet. The PT-D9610E and PT-D9510E will even send an e-mail message to alert you of any operating errors or notify you when the lamp needs to be replaced, providing an advanced level of maintenance ease and reliability.



Invaluable Options

Lenses

A wide variety of optional lenses allow the user to project wide-screen images to accommodate a range of site conditions. Options include three types of zoom lenses and one fixed short-focus lens.

Boards

In addition to the supplied boards for network and remote control,



Two sets of terminal boards (network and remote control) are supplied. Up to three optional boards can be installed.

up to three optional board modules can be installed to match a variety of input source signals, including digital serial component signals.

Installation

A ceiling bracket is available as an option. The dual stacking mount bracket allows the user to assemble a system that provides brightness of up to 24,000 ANSI lumens. The lens axis shift function helps eliminate image distortion by allowing the precise positioning of the projected images.

Low Noise Design

Using an Active Noise Control (ANC) technology and advanced design structure, the low and high frequency noises are effectively cancelled. Because the control effect is monitored by microphones, optimal silencing is obtained at all times. So, images are presented in a whisper-quiet environment.

Other Features

- Auto setup
- Digital keystone correction
- Parallel remote connector
- RS-232C/RS-422 remote in/out connectors
- Wireless/wired remote control
- Motorized focus
- Ceiling/floor, front/rear projection
- Easy-handling frame

