

High Powered, High Performance



- High image quality
 - 3200 lumens
 - Progressive cinema scan (3/2 pulldown)
 - 3D digital comb filter
 - Dynamic sharpness control
- Flexible system applications
 - Powered zoom/focus lens
 - Optional lenses for various venues
 - Easy lens replacement
 - Multiple terminals including DVI
 - Quiet operation
- Networking
 - Wired LAN system
 - Web browser control/monitoring
 - E-mail message alert
- Sophisticated features
 - Direct power off
 - Anti-theft features
 - Easy lamp replacement
 - One-touch auto setup
 - H/V keystone correction

High-Performance Projector with LAN Networking Capabilities

Panasonic's PT-L785U meets a wide range of projection needs. With 3,200 lumens of brightness, it offers a unique combination of high performance and economy for projecting in venues from small meeting rooms to auditoriums. Connected to a LAN network, it is easily remote controlled or monitored from any computer on the network—an especially great feature when using the PT-L785U as a fixed-installation projector. High performance, lots of functions, easy operation ... whatever it is you are looking for in a projector, you are sure to find it in the PT-L785U.

High Image Quality

3,200 Lumens

Incorporating 1.0-inch LCD panels, a 270-watt UHM™ lamp, and a highly efficient optical system, the PT-L785U achieves outstanding brightness of 3,200 lumens.



Progressive Cinema Scan (3/2 Pulldown)

This function automatically detects when the input signal is derived from filmed material and selects the optimum progressive processing method to assure faithful reproduction of the original image.

3D Digital Comb Filter

This 3-dimensional Y/C separation comb filter gives the PT-L785U its ability to project crisp, vivid video source images.

Dynamic Sharpness Control

The Dynamic Sharpness Control circuit adjusts the video signal waveforms based on the difference in brightness of adjacent pixels for a sharp, clear picture that is relatively unaffected by signal noise.

Easy Lens Replacement

It's a snap to replace the "click-in" type lenses used in the PT-L785U's bayonet system.

Multiple Terminals Including DVI

The PT-L785U has an array of terminals—three RGB inputs including a 5-BNC connector and one monitor out, two video inputs, DVI-D and control capability—to support a broad range of projection needs.

Quiet Operation

The unique Panasonic silence design ensures that the audience is not disturbed by projector noise, so they can concentrate fully on your presentation.

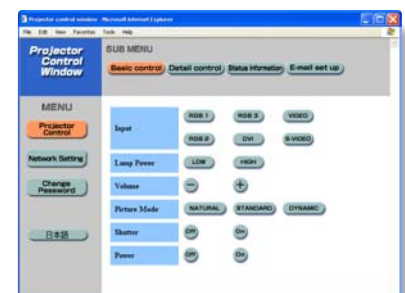
Networking

Wired LAN System

The PT-L785U comes standard-equipped with a LAN connector (RJ-45) for 10Base-T/100Base-TX connection. Simply hook it up to your existing LAN network for easy remote control and/or monitoring. System administrators will appreciate this feature when using the PT-L785U as a fixed-installation projector.

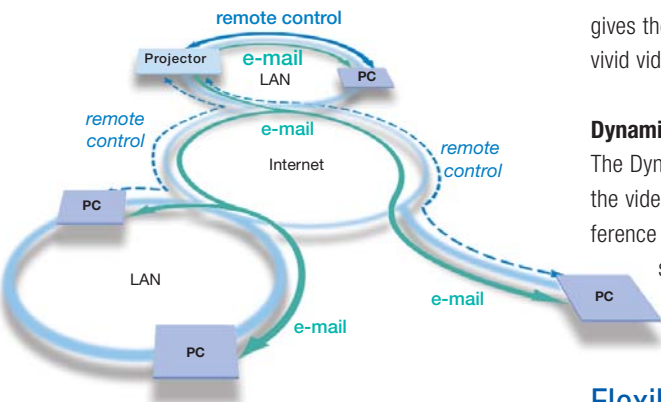
Web Browser Control/Monitoring

Anybody can operate the PT-L785U by remote control or monitor its status over a LAN network, because it is all done using the computer's familiar Web browser.



E-Mail Message Alert

The PT-L785U automatically sends an e-mail message to notify the operator when an error has occurred, or a lamp needs to be replaced.



Flexible System Applications

Powered Zoom/Focus Lens

The PT-L785U features a motor-driven zoom and focus lens. In a fixed installation, this means you can use the supplied remote control from virtually anywhere in the room to adjust the zoom and focus with the on-screen menu.

Optional Lenses for Various Venues

Three optional lenses with different throw distances are available in addition to the supplied lens. These powered zoom/focus lenses enable the projectors to perform superbly in an array of projection environments, from classrooms to conference rooms.



The bayonet system makes lens replacement quick and easy.

Sophisticated Features

Direct Power Off

When the presentation is done, Direct Power Off lets you turn off the projector right away while minimizing lamp damage, because the cooling fan keeps operating until the lamp is cooled. With fixed installations, this means you can turn off the room's main power without waiting for the projector to cool down.

Anti-Theft Features

The PT-L785U is designed with effective anti-theft features, including a User Password, Control Panel Lock and Text Superimposing. It also has a security lock slot compatible with the Kensington MicroSaver® cable.

Easy Lamp Replacement

Lamp replacement is a snap—just open the back panel and install a new lamp.



One-Touch Auto Setup

The projector handles all image adjustments, from phasing and dot clocks to vertical and horizontal position. Simply press the Auto Setup button to automatically tune and adjust the image for optimal viewing.

H/V Keystone Correction

The PT-L785U handles both vertical (up/down) and horizontal (left/right) keystone correction adjustments. This ensures high-precision presentations whether you are using the PT-L785U as a portable unit or in a fixed installation.



More Valuable Features

- HDTV compatibility
- Full compatibility with sRGB color space for accurate color reproduction (in natural mode)
- Color temperature selection (standard/high/low)
- Picture mode selection (standard/dynamic/natural)
- 4x digital zoom
- Advanced shutter function for image muting
- Freeze
- Selectable 9-language on-screen menu (English, German, French, Spanish, Italian, Russian, Japanese, Chinese, Korean)
- Full-function wireless remote with mouse control and laser pointer
- Ceiling mountable (option)
- Lamp power high/low selection
- Fan control for high elevations (above 4,600 feet/1,400 m)
- Temperature warning indication
- Lamp replacement warning indication
- Built-in carrying handle
- Cable cover supplied

The supplied cable cover can be used as a storage container for cables and the remote control when putting the projector away or just moving it. In the ceiling-mounted configuration, this cover hides the cable connections, protects the terminals, and gives the unit a neat appearance.



Photo shows the PT-L785U mounted on the optional ceiling mount bracket ET-PK780.



Supplied full-function wireless remote control with mouse control and laser pointer



Side view

Specifications

Power supply	100–240 V AC, 50/60 Hz
Power consumption	380 W (max. 11 W in standby mode with fan stopped)
Optical system	Dichroic mirror separation/prism synthesis system
LCD panel	
Panel size	1.0" diagonal with micro lens array (4:3 aspect ratio)
Display method	Transparent LCD panel (x 3, R/G/B)
Drive method	Active matrix
Pixels	786,432 (1,024 x 768) x 3, total of 2,359,296 pixels
Pixel configuration	Stripe
Lens	Powered zoom/focus lens (1:1–1:1.3), F 1.7–2.1, f 40.7–52.8 mm
Lamp	270 W UHM™ lamp
Projection size	1,016–7,620 mm (40–300 inches) diagonally (4:3 aspect ratio)
Colors	Full color (16,777,216 colors)
Brightness	3,200 lumens
Center-to-corner uniformity ratio	90%
Contrast ratio	500:1
Scanning frequency	
RGB	Horizontal: 15–91 kHz,
YPbPr	Vertical: 50–87 Hz
	480i (525i): fh 15.75 kHz; fv 60 Hz
	576i (625i): fh 15.63 kHz; fv 50 Hz
	480p (525p): fh 31.5 kHz; fv 60 Hz
	576p (625p): fh 31.25 kHz; fv 50 Hz
	720p (750p): fh 45 kHz; fv 60 Hz
	1080i (1125i): fh 33.75 kHz; fv 60 Hz
	1080i (1125i): fh 28.125 kHz; fv 50 Hz
S-Video/Video	NTSC, NTSC4.43, PAL-M, PAL60: fh 15.75 kHz; fv 60 Hz
	PAL, SECAM, PAL-N: fh 15.63 kHz; fv 50 Hz
Optical axis shift	10:0 (fixed)
Keystone correction range*1	Vertical: ±35° with no horizontal correction (with supplied lens) Horizontal: ±7° with no vertical correction (with supplied lens)

Installation	Ceiling/desk, front/rear (menu selection)
Built-in speakers	
Size	4 x 3 cm/1.6" x 1.2" (x 2)
Output power	2.0 W + 2.0 W
Terminals	
DVI-D IN	DVI-D 24-pin x 1
RGB 1 IN	D-sub HD 15-pin x 1
RGB signal	G: 0.7 Vp-p (1.0 Vp-p for Sync on G), 75 Ω; R, B: 0.7 Vp-p, 75 Ω
	HD, VD, SYNC: TTL, high impedance (positive/negative polarity)
YPbPr signal	Y: 1.0 Vp-p (including sync signal), 75 Ω; PB, PR: 0.7 Vp-p, 75 Ω
RGB 2 IN/RGB OUT**	D-sub HD 15-pin x 1
RGB signal	G: 0.7 Vp-p (1.0 Vp-p for Sync on G), 75 Ω; R, B: 0.7 Vp-p, 75 Ω
	HD, VD, SYNC: TTL, high impedance (positive/negative polarity)
YPbPr signal	Y: 1.0 Vp-p (including sync signal), 75 Ω; PB, PR: 0.7 Vp-p, 75 Ω
RGB 3 IN	5-BNC x 1
RGB signal	G: 0.7 Vp-p (1.0 Vp-p for Sync on G), 75 Ω; R, B: 0.7 Vp-p, 75 Ω
	HD, VD, SYNC: TTL, high impedance (positive/negative polarity)
YPbPr signal	Y: 1.0 Vp-p (including sync signal), 75 Ω; PB, PR: 0.7 Vp-p, 75 Ω
VIDEO IN	RCA pin x 1, 1.0 Vp-p, 75 Ω
S-VIDEO IN	Mini DIN 4-pin x 1, Y: 1.0 Vp-p, C: 0.286 Vp-p, 75 Ω
RGB AUDIO IN	M3 (L, R) x 1, 0.5 Vrms, common for DVI-D, RGB 1, RGB 2 and RGB 3
VIDEO AUDIO IN	RCA x 1 (L, R), 0.5 Vrms
AUDIO OUT	M3 (L, R) x 1, 0–2.0 Vrms (variable)
SERIAL	Mini DIN 9-pin x 1 (RS-232C)
REMOTE IN	Mini DIN 9-pin x 1
LAN	RJ-45 x 1 (10Base-T/100Base-TX)
Power cord length	9'10" (3 m)
Cabinet material	ABS/PC
Dimensions (W x H x D)	11-1/32" x 5-3/8" x 15-31/32" (290 x 137 x 406 mm)
Weight	12.8 lbs. (5.8 kg)

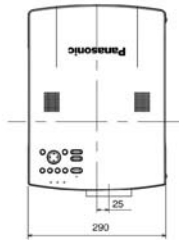
Operating environment	
Temperature	32°–104°F (0°–40°C)
Humidity	20%–80% (no condensation)
Remote control unit	
Power supply	3 V DC (Lithium AAA battery x 2)
Operation range**3	Approx. 23 feet (7 m) when operated from directly in front of the signal receptor
Dimensions (W x H x D)	1-3/4" x 5-11/16" x 7/8" (45 x 145 x 23 mm)
Weight	3.4 ozs. (95 g) (including a battery)

Supplied accessories	<ul style="list-style-type: none"> • Full-function remote control • Battery for remote control • Power cord • RGB cable • Cable housing
-----------------------------	--

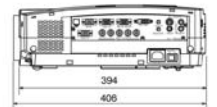
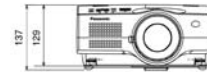
Optional accessories	<ul style="list-style-type: none"> Replacement lamp unit: ET-LA785 Ceiling mount bracket for high ceilings: ET-PK780 Ceiling mount bracket for low ceilings: ET-PK780S Wireless mouse receiver: ET-RMRC2 1.3–1.7:1 zoom lens: ET-LE10 2.6–4.2:1 zoom lens: ET-LE20 4.0–5.6:1 zoom lens: ET-LE30
-----------------------------	--

- *1 Correction range differs when both vertical and horizontal keystone distortions are corrected at the same time. Also it differs depending on input signal.
- *2 Selectable with on-screen menu. Serves as an output terminal for RGB1 or RGB3 input.
- *3 Operation range differs depending on the environment.

Dimensions

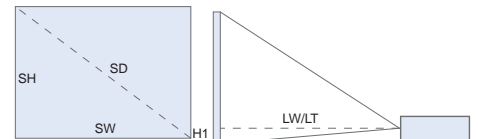


Unit: mm/inch



Projection Distance

Screen size (4:3)	Throw distance											
	With ET-LE10			with supplied lens			With ET-LE20			With ET-LE30		
	min.	recommended	max.	min.	recommended	max.	min.	recommended	max.	min.	recommended	max.
1.0 m (3.3')	1.1 m (3.6')	1.3 m (4.3')	1.3 m (4.3')	1.6 m (5.2')	1.9 m (6.2')	2.0 m (6.6')	2.1 m (6.9')	2.5 m (8.2')	3.3 m (10.8')	3.4 m (11.2')	4.6 m (15.1')	4.6 m (15.1')
1.5 m (5.0')	1.6 m (5.2')	2.0 m (6.6')	2.0 m (6.6')	2.4 m (7.9')	2.9 m (9.5')	3.1 m (10.2')	3.2 m (10.5')	3.9 m (12.8')	5.0 m (16.4')	5.0 m (16.4')	6.9 m (22.6')	6.9 m (22.6')
2.0 m (6.7')	2.2 m (7.2')	2.7 m (8.9')	2.7 m (8.9')	3.2 m (10.5')	3.9 m (12.8')	4.2 m (13.8')	4.3 m (14.1')	5.2 m (17.1')	6.8 m (22.3')	6.6 m (21.7')	9.2 m (30.2')	9.2 m (30.2')
2.5 m (8.3')	2.7 m (8.9')	3.5 m (11.5')	3.5 m (11.5')	4.0 m (13.1')	4.9 m (16.1')	5.3 m (17.4')	5.4 m (17.7')	6.5 m (21.3')	8.5 m (27.9')	8.2 m (26.9')	11.5 m (37.7')	11.5 m (37.7')
3.0 m (10.0')	3.2 m (10.5')	4.2 m (13.8')	4.2 m (13.8')	4.8 m (15.7')	5.9 m (19.4')	6.3 m (20.7')	6.6 m (21.7')	7.9 m (25.9')	10.3 m (33.8')	9.9 m (32.5')	13.8 m (45.3')	13.8 m (45.3')
3.8 m (12.5')	4.0 m (13.1')	5.2 m (17.1')	5.2 m (17.1')	6.1 m (20.0')	7.4 m (24.3')	7.9 m (25.9')	8.2 m (26.9')	9.9 m (32.5')	12.9 m (42.3')	12.3 m (40.4')	17.3 m (56.8')	17.3 m (56.8')
5.1 m (16.7')	5.4 m (17.7')	7.0 m (23.0')	7.0 m (23.0')	8.1 m (26.6')	9.8 m (32.2')	10.6 m (34.8')	11.0 m (36.1')	13.3 m (43.6')	17.2 m (56.4')	16.3 m (53.5')	23.0 m (75.5')	23.0 m (75.5')
6.4 m (20.8')	6.7 m (22.0')	8.8 m (28.9')	8.8 m (28.9')	10.1 m (33.1')	12.3 m (40.4')	13.3 m (43.6')	13.8 m (45.3')	16.6 m (54.5')	21.6 m (70.9')	20.4 m (66.9')	28.7 m (94.2')	28.7 m (94.2')
7.6 m (25.0')	8.1 m (26.6')	10.6 m (34.8')	10.6 m (34.8')	12.2 m (40.0')	14.8 m (48.6')	16.0 m (52.5')	16.5 m (54.1')	20.0 m (65.6')	26.0 m (85.3')	24.4 m (80.1')	34.5 m (113.2')	34.5 m (113.2')



- SD: Diagonal image size
- SH: Height of projected image
- SW: Width of projected image
- LW: Minimum projection distance
- LT: Maximum projection distance
- H1: Height from the edge of screen to center of lens

Panasonic

Please contact Panasonic or your dealer for a demonstration.



Weights and dimensions shown are approximate. Specifications are subject to change without notice. This product may be subject to export control regulations. UHM is a trademark of Matsushita Electric Industrial Co., Ltd. VESA and XGA are trademarks of International Business Machines Corporation. All other trademarks are the property of their respective trademark owners. Projection images simulated. PT-L785UL1-04SEP Printed in Japan.